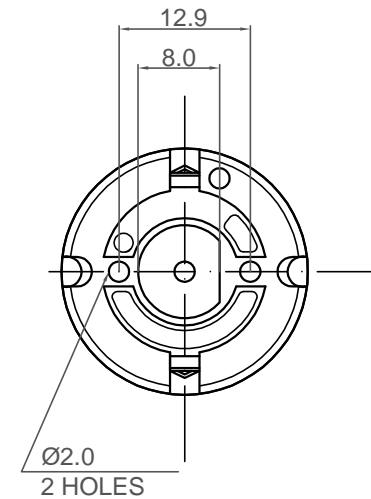
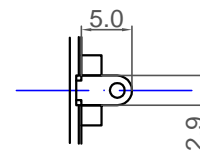
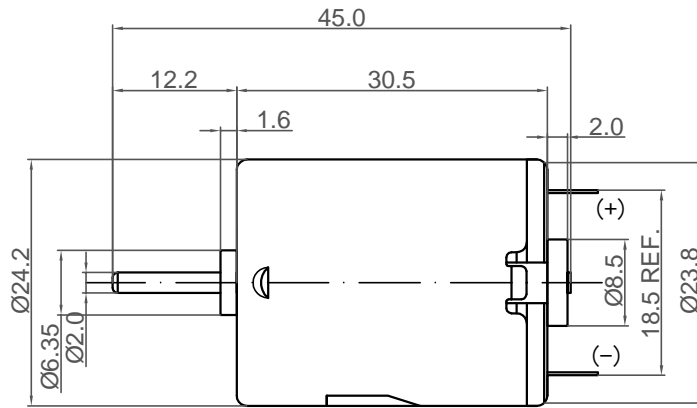
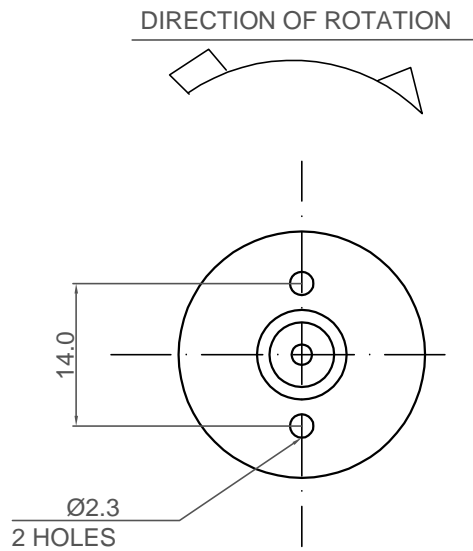


NO.	ITEM	SPECIFICATION
1	Rated Voltage(VDC)	7.2
2	No Load speed(RPM)	16800
3	No Load Current(A)	0.21
4	Rated Speed(RPM)	14260
5	Rated Current (A)	1.18
6	Torque(g-cm)	33.3
7	Output Power(W)	4.87

Rev.	Revision	Date
01	Update	1/14/2011



DRAWN	Gordon	1/14/2011
CHECKED	Sara	1/14/2011
ENG APPR.		
MFG APPR.		
Q.A.		

UNIT: mm

Sinotech

RC280RA2485

SIZE
A4

P/N
177498

REV
01

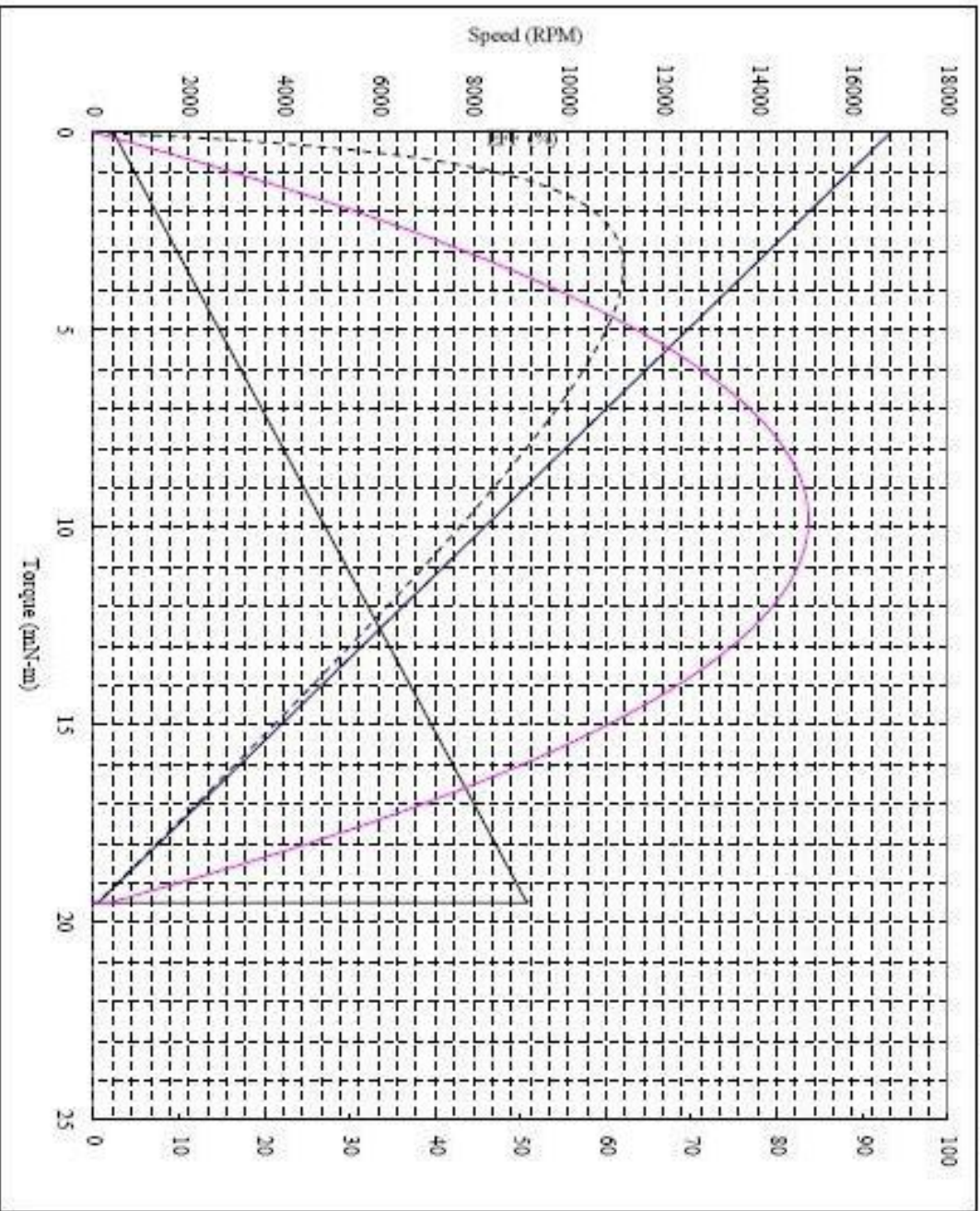
SCALE: 2:1

Weight(kg): 0.07

SHEET 1 OF 1

Project No.: 0
 No. :
 Model : RC-280RA-2485

Date : 04-26-12
 Full scale : 100 % Eff
 10.0 Wats
 10.0 Amp.



Performance (in an ambient temperature of 25-30 ° C)

Motor tested rapidly to prevent significant temperature rise

At a constant voltage of : 7.20 Volts

Direction CW

At No Load

Speed : 16800 RPM
 Current : 0.23 AMPS

At stall (Extrapolated)

Torque : 19.60 mN-m
 Current : 5.100 AMPS

At maximum efficiency

Efficiency: 62.0 %
 Torque : 3.433 mN-m
 Speed : 13857 RPM
 Current : 1.083 AMPS
 Output : 4.84 Wats

At maximum Power output

Output : 8.371 Wats
 Torque : 9.800 mN-m
 Speed : 9193 RPM
 Current : 2.44 AMPS

Characteristics

Torque constant : 4.025 mN-m/AMP
 E.M.F. constant : 4.025 mV/rad/sec
 Dynamic resistance: 1.4118 Ohms
 Motor regulation : 857.14 RPM/mN-m

Issued by QA Reliability Testing Center

COMPUTER PRINT-OUT
 NOMINAL MOTOR CURVES
 Performance and characteristics
 are measured based on limited
 motor samples only