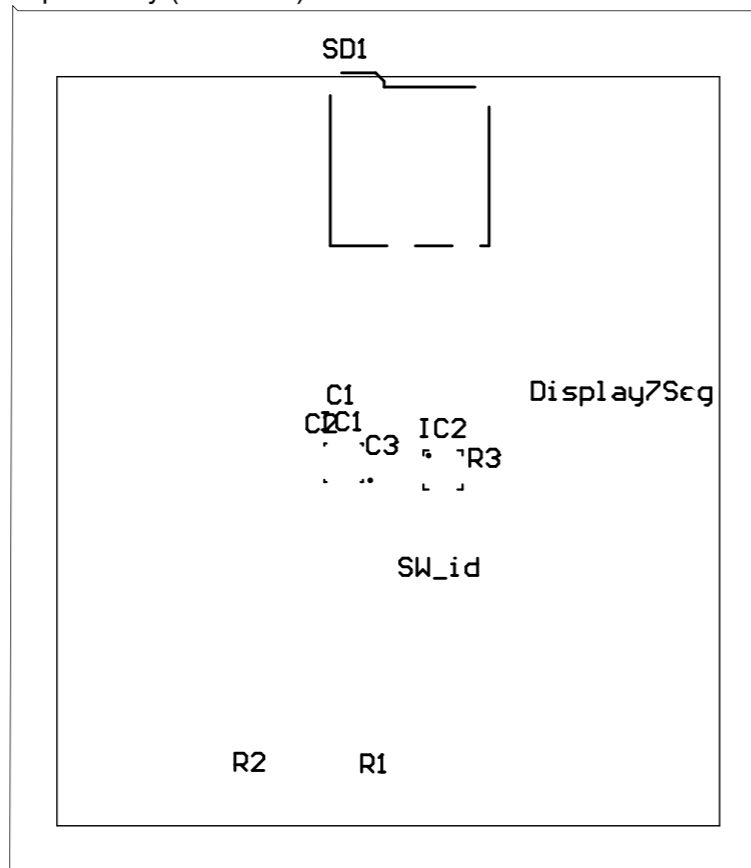
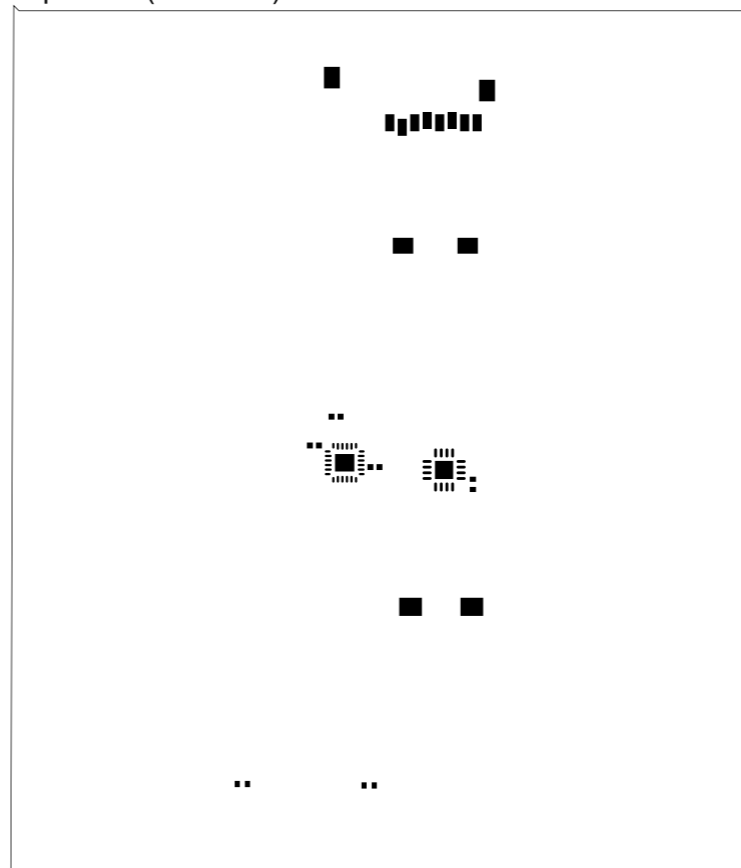


Top Overlay (Scale 3:2)



Top Paste (Scale 3:2)




Lista de Materiais

Line #	Posição	Part No	Descrição	Cod. EMS	Qtde
1	C1, C2	VJ0402V104ZXQPBC	CAP CER 0.1UF 10V 20% X5R 0402	05.281.006.133	2
2	C3	JMK105BJ105KV-F	CAP CER 1UF 6.3V 10% X5R 0402	05.281.019.513	1
3	Display7Seg		7 segments display		1
4	IC1	MPU-9250	IMU ACCEL/GYRO/MAG I2C/SPI 24QFN		1
5	IC2	STMPE811QTR	IC TSC I/O EXPAND 8B 16QFN	05.284.001.511	1
6	LED_BALL, LED_COM		LED 5MM PTH		2
7	R1, R2	ERJ-2RKF3300X	RES 330 OHM 1/10W 1% 0402 SMD	05.280.029.506	2
8	R3	ERJ-2RKF1002X	RES 10K OHM 1/10W 1% 0402 SMD	05.280.029.525	1
9	SD1		CONN MICRO SD CARD PUSH-PUSH R/A		1
10	STM32F4-DISCOVERY-SCH				1
11	SW_id	95C04A3GWRT	GRAYHILL TACT,GW,6X3.5,1800T&R,LF Eight, 160g Operating Force, Gull Wing, RoHS Compliant		1

ADICIONAR DIMENSÕES RELEVANTES  
ADICIONAR "BOARD DETAILS"  
QUE FOREM NECESSÁRIOS

				ESC: ----	UNID Métrico
				PROJ.	DES.
				ENG:	VER.
				C.Q.	APROV
				DATA EMISSÃO:	
				DATA CONFEÇÃO:	
ALTERAÇÕES	USADO CONJUNTO	USADO EQUIPAMENTO			

**INDÚSTRIA DE MATERIAL BÉLICO DO BRASIL**  

 VINCULADA AO EXÉRCITO BRASILEIRO  
 FABRICA DE MATERIAL DE COMUNICAÇÕES E ELETRÔNICA

TÍTULO:

CÓDIGO:

ESTOQUE:

A

B

C

D

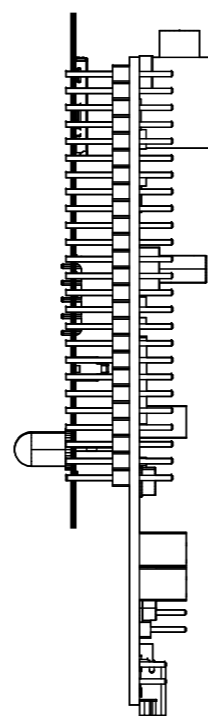
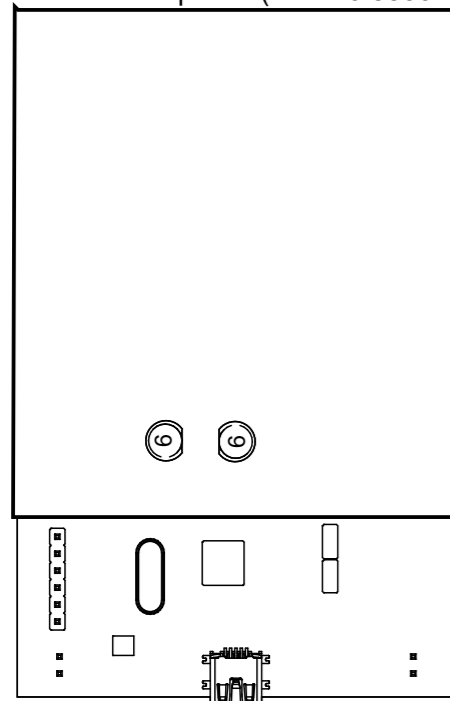
E

F

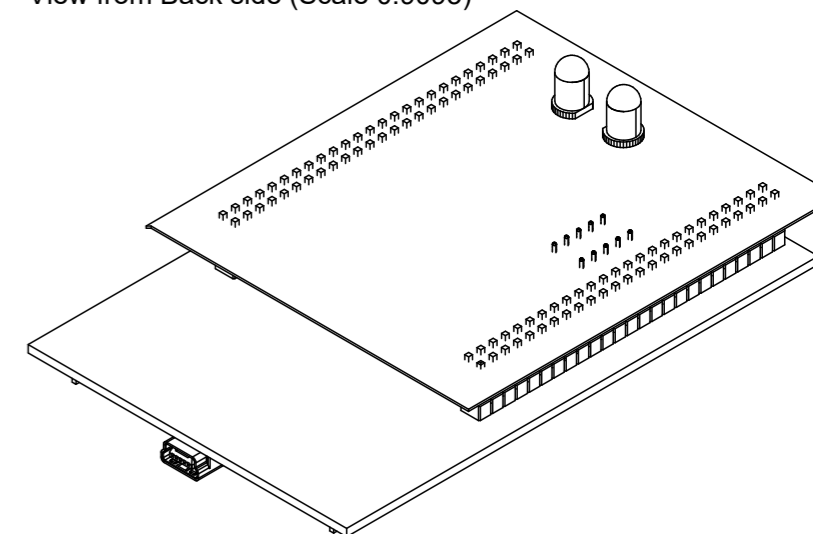
G

H

View from Top side (Scale 0.883046357615894)

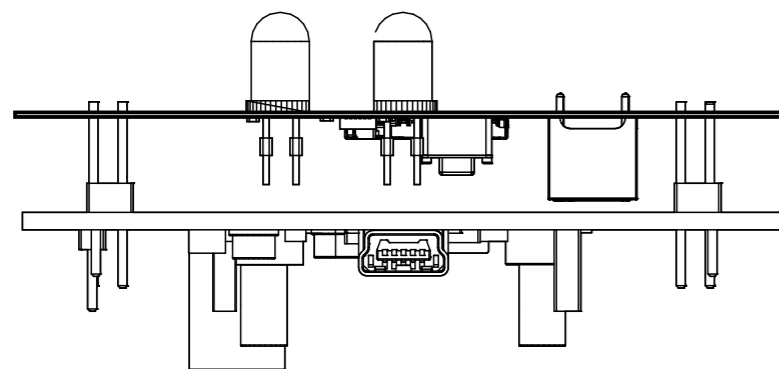


View from Back side (Scale 0.9093)




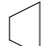

## ADICIONAR DIMENSÕES RELEVANTES

View from Front side (Scale 1.5385)



## Lista de Materiais

Line #	Posição	Part No	Descrição	Cod. EMS	Qtde
1	C1, C2	VJ0402V104ZXQPBC	CAP CER 0.1UF 10V 20% X5R 0402	05.281.006.133	2
2	C3	JMK105BJ105KV-F	CAP CER 1UF 6.3V 10% X5R 0402	05.281.019.513	1
3	Display7Seg		7 segments display		1
4	IC1	MPU-9250	IMU ACCEL/GYRO/MAG I2C/SPI 24QFN		1
5	IC2	STMPE811QTR	IC TSC I/O EXPAND 8B 16QFN	05.284.001.511	1
6	LED_BALL, LED_COM		LED 5MM PTH		2
7	R1, R2	ERJ-2RKF3300X	RES 330 OHM 1/10W 1% 0402 SMD	05.280.029.506	2
8	R3	ERJ-2RKF1002X	RES 10K OHM 1/10W 1% 0402 SMD	05.280.029.525	1
9	SD1		CONN MICRO SD CARD PUSH-PUSH R/A		1
10	STM32F4-DISCOVERY-SCH				1
11	SW_id	95C04A3GWRT	GRAYHILL TACT,GW,6X3.5,1800T&R,LF Eight, 160g Operating Force, Gull Wing, RoHS Compliant		1

			<b>INDÚSTRIA DE MATERIAL BÉLICO DO BRASIL</b>		
			 VINCULADA AO EXÉRCITO BRASILEIRO FABRICA DE MATERIAL DE COMUNICAÇÕES E ELETRÔNICA		
			TÍTULO:		
			ESC: ----	UNID Métrico	
			PROJ.	DES.	
DATA	S.S.		ENG:	VER.	
			C.Q.	APROV	
ALTERAÇÕES		USADO CONJUNTO	USADO EQUIPAMENTO	DATA EMISSÃO:	  CÓDIGO: ESTOQUE:
			DATA CONFEÇÃO:		

A

B

C

D

E

F

G

H

A

B

C

D

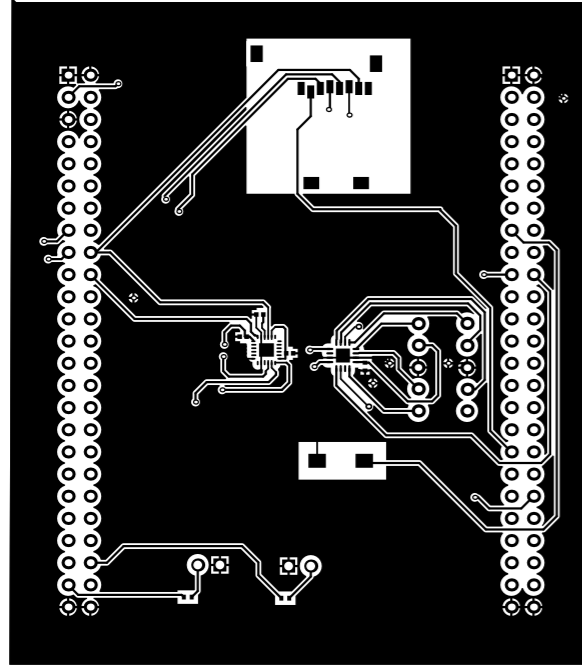
E

F

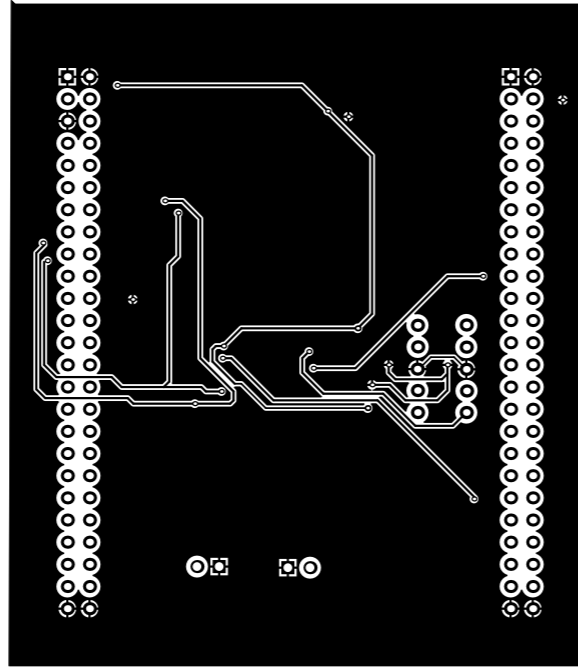
G

H

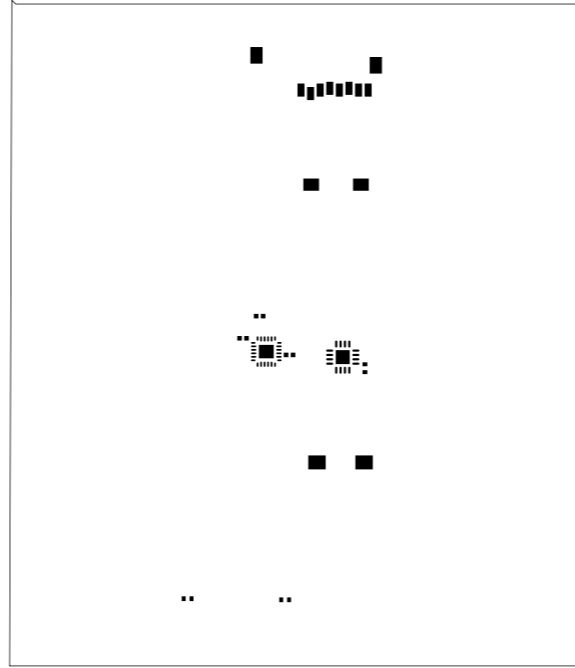
Top Layer (Scale 1.1538)



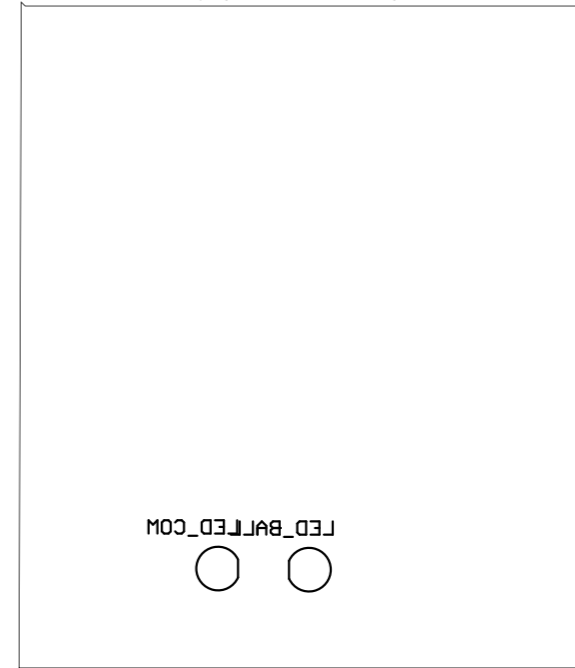
Bottom Layer (Scale 1.1538)



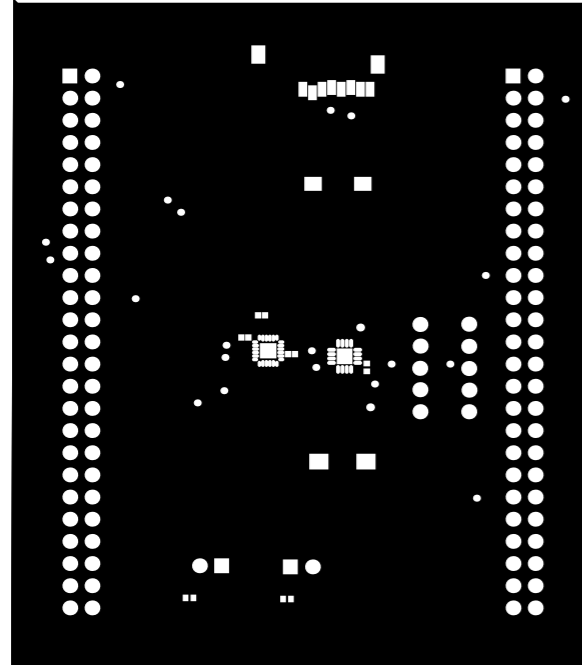
Top Paste (Scale 1.1538)



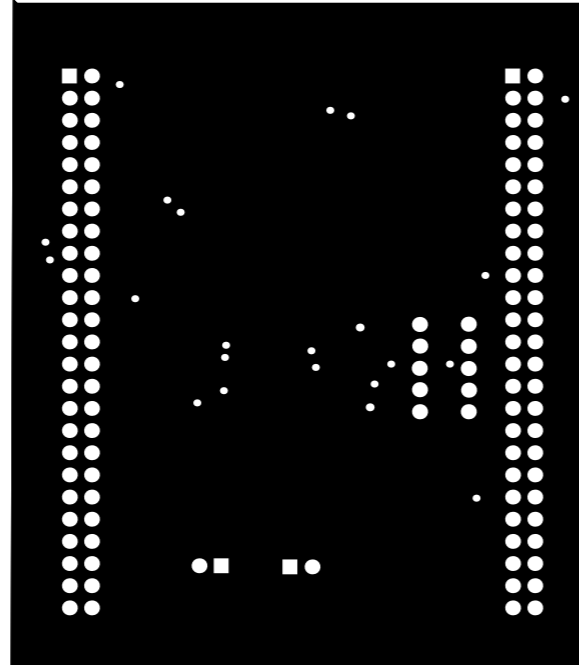
Bottom Overlay (Scale 1.1538)



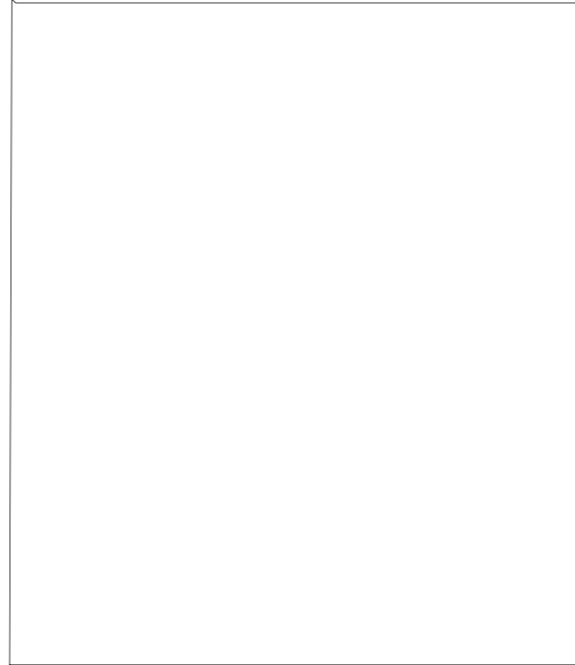
Top Solder (Scale 1.1538)



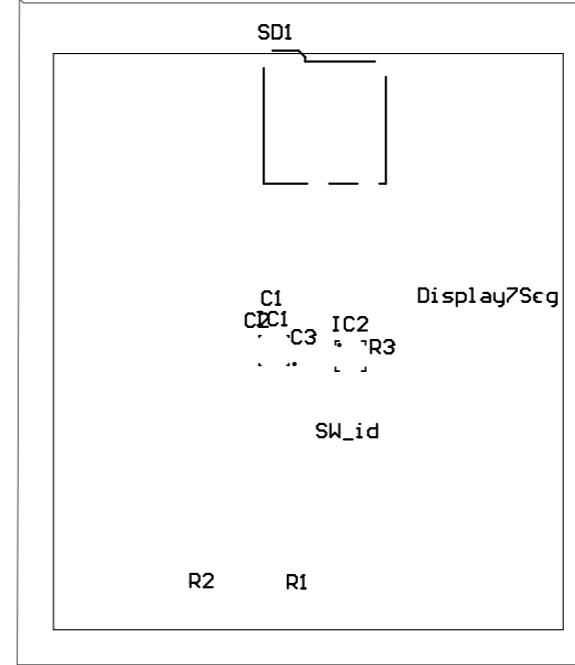
Bottom Solder (Scale 1.1538)



Bottom Paste (Scale 1.1538)



Top Overlay (Scale 1.1538)



1

2

3

4

5

1

2

3


4

5

6

6

					ESC: ----	UNID Métrico	
					PROJ.	DES.	
					ENG:	VER.	
					C.Q.	APROV	
					DATA EMISSÃO:		
					DATA CONFEÇÃO:		
ALTERAÇÕES		USADO CONJUNTO		USADO EQUIPAMENTO			

**INDÚSTRIA DE MATERIAL BÉLICO DO BRASIL**  

 VINCULADA AO EXÉRCITO BRASILEIRO  
 FABRICA DE MATERIAL DE  
 COMUNICAÇÕES E ELETRÔNICA

TÍTULO:



CÓDIGO:

ESTOQUE:

A

B

C

D

E

F

G

H

A

B

C

D

E

F

G

H

1

2

3

1

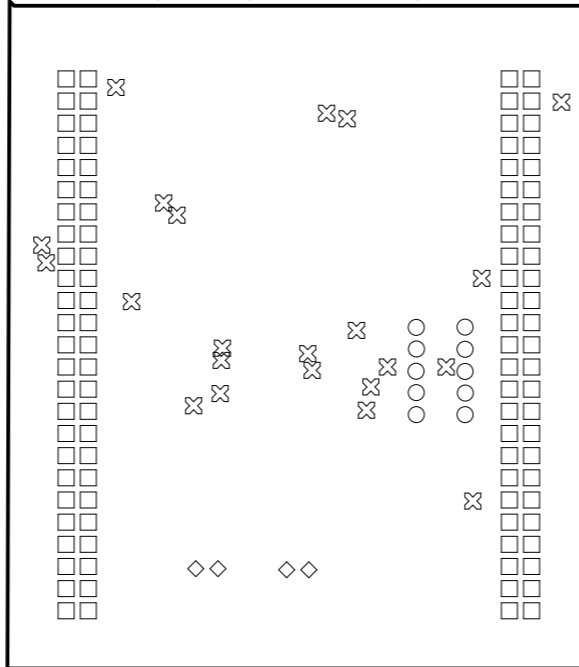
2

3

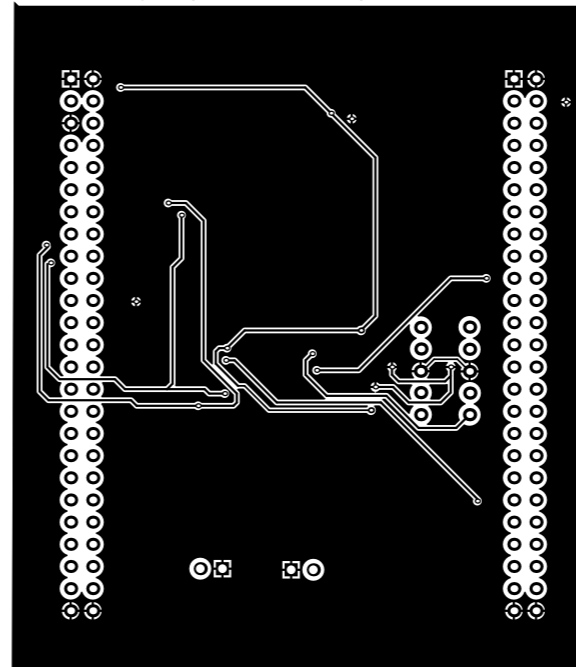
Drill Table

Symbol	Count	Hole Size	Plated	Hole Tolerance
⊗	22	0.30mm	Plated	None
○	10	0.76mm	Plated	None
□	100	0.80mm	Plated	None
◇	4	1.00mm	Plated	None
136 Total				

Drill Drawing View (Scale 1.1538)



Bottom Layer (Scale 1.1538)



Layer Stack Legend


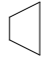

Material	Layer	Thickness	Dielectric Material	Type	Gerber
	Top Paste			Paste Mask	GTP
	Top Overlay			Legend	GTO
Surface Material	Top Solder	0.01mm	Solder Resist	Solder Mask	GTS
<b>Copper</b>	<b>Top Layer</b>	<b>0.04mm</b>		<b>Signal</b>	<b>GTL</b>
		0.32mm	FR-4	Dielectric	
<b>Copper</b>	<b>Bottom Layer</b>	<b>0.04mm</b>		<b>Signal</b>	<b>GBL</b>
Surface Material	Bottom Solder	0.01mm	Solder Resist	Solder Mask	GBS
	Bottom Overlay			Legend	GBO
	Bottom Paste			Paste Mask	GBP
Total thickness: 0.41mm					

5

5

6

6

				<b>INDÚSTRIA DE MATERIAL BÉLICO DO BRASIL</b>	
				 VINCLADA AO EXÉRCITO BRASILEIRO FABRICA DE MATERIAL DE COMUNICAÇÕES E ELETRÔNICA	
				TÍTULO:	
				ESC: ----	UNID Métrico
				PROJ.	DES.
DATA		S.S.		ENG:	VER.
				C.Q.	APROV
ALTERAÇÕES		USADO CONJUNTO		USADO EQUIPAMENTO	
				DATA EMISSÃO:	
				DATA CONFEÇÃO:	
				 	
				CÓDIGO:	
				ESTOQUE:	

A

B

C

D

E

F

G

H